



Visual Evolution

Video management software comes with service support

macula[®]

Macula's key integral elements work together to create a cohesive and up-to-date piece of VMS software. When it comes to modern surveillance, every detail is important, so integration with Ai, IoT sensors and Database will be taken care of. Delivering an outstanding quality performance, this video management software backed by TrueBlue Care, support inclusive phone, email, and remote support, all inclusive without additional payment. Besides, it is also available for paid TrueBlue Professional Service Onsite for enhanced peace of mind and the satisfaction of job well done.



64 bit core

Use the full power of your hardware with macula



Powerful analytics tools

Applications for advanced Ai video analytics, along with face and license plate recognition



Smart Logic

Always be in control: IoT automate your video surveillance process with the Smart Logic Event and Action



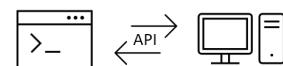
Failover

Continuous monitoring of the status of all servers and failover management from the central server



Archive replication

Advanced mirror recording with scheduled transfers ensures the safety of your data at all times



Addon APP Integrations

Combining your video surveillance with add-on software integrations to 3rd party API database possibilities



Macula Professional

To all the benefits of the Macula VMS core, proven to be high-quality and reliable, Macula Professional adds intuitive user interface and better functionality. Together with advanced features, it uses virtually any stream resolution as well as has no software limitation in remote connections from client and mobile.

MACULA PROFESSIONAL FEATURES

Essentially Effective

Macula VMS is speedy, you enjoy fast live streaming, fast video archive search and playback. What's most importantly it's backed by TrueBlue Support Service.

Video Content Analysis

Exploit the full potential of your video surveillance system with video content analysis. Not only does it improve the functionality of your surveillance, the ability to analyse large amounts of data to determine a specific pattern for the exact task, it also increases security and safety and is useful for many other areas of your enterprise, like HR and marketing.

Camera Devices

Support almost any cameras in the market, with more than 4000+ integrated models. Onvif compliance and RTSP device streaming support. As well as cameras in iPhone/iPad, Android and video files like avi, mp4, etc.

Audio Devices

Support IP network audio speakers, IP audio encoder. Windows audio session API (WASAPI) devices, and computer USB audio device.

Affordable

Macula Professional is affordable and cost effective at only USD100 /RM400 per channel license.

Edge Recording

Synchronise all your data with IP device storage with ONVIF-G Profile. By doing this, even if the network connection with any camera is lost, your data will still be recorded by the camera. It will be transferred in full to your server as soon as the network connection is re-established.

Maps

Complete examination of the entire installation of cameras, providing an immediate visual verification. All the alerts are integrated with the maps and can be set up so that they can be viewed on the overview as well you are able to immediately specify the location of the alarm event.

SCADA & I/O Devices

Connect to network I/O module to support multi sensors inputs and outputs control for automation. As well as open platform communications (OPC) from SCADA system

Mobile Applications

Use your mobile device to access live and archived streams. Trigger action like I/O via user defined buttons. Turn your mobile into a surveillance cameras.

Smart Logic Event and Action Manager

Specify your desired outcome of your video surveillance system's operation. Determine how software reacts to any event caught on camera and how it turns them into an automated process. Send emails, activate DI/DO, interact with any other software or just bring the attention of the operator to the camera that requires their immediate action. The functionality can be used not just for a single event, but a set of sequenced events to get rid of false alarms and improve the efficiency of your surveillance system.

Integrations and API

Macula offers customisable integration with other software systems in the form of a software development kit (SDK), and HTTP API.

Web access

Get permanent access to live streaming and archive video through your web browser





Macula Enterprise

Macula Enterprise is a complete centralised managed surveillance ecosystem solution for enterprises of any size, even those distributed across multiple sites. The software was designed with the core of GSF HDCCTV Experience, whose quality has been proven over the last decade. This new modern software, Macula, is not only offering 64-bit speed and all the necessary tools for setting up an absolute situational alertness system aimed to respond quickly to events, but also introduces a central server governance hierarchy of all the components.

MACULA ENTERPRISE FEATURES

* All Macula Professional features are inclusive in Macula Enterprise

Centralized Managed

Single logon multi managed make management of large-scale system much more effective and efficient in operation. Central server hold all user accounts, permission, asset resources, settings etc.

Multi Hardware

Macula enterprise asset license was installed in central server, you can assign any number of computer hardware like storage servers without limits.

Video Wall

Get the most out of your video wall in the control room. Macula Video Wall offers improved configuration and functionality, as well as the ability to easily manage large-display installations. It is vital for operating large-scale video surveillance systems, especially where the ability to easily examine the area and quickly react to alarm events is essential.

Advanced Health Monitoring

Keep your finger on the pulse of all of your hardware, minimising the risk of inconvenient surprises, and control the state of the whole video surveillance system.

Multicast

Enjoy full use of the multicast environment, transmitting to different destination devices (both servers and cameras). The functionality allows for fully integrated work with large enterprise environments using Active Directory or LDAP technology.

Failover

Automated recovery of your system in the event of a sudden server failure. Macula Enterprise carefully tracks operations of all servers, and, in case any of the servers has failed, it quickly activates a spare server to perform the actions that the malfunctioning server was performing prior to failing.

Universal PSIM and iSMS

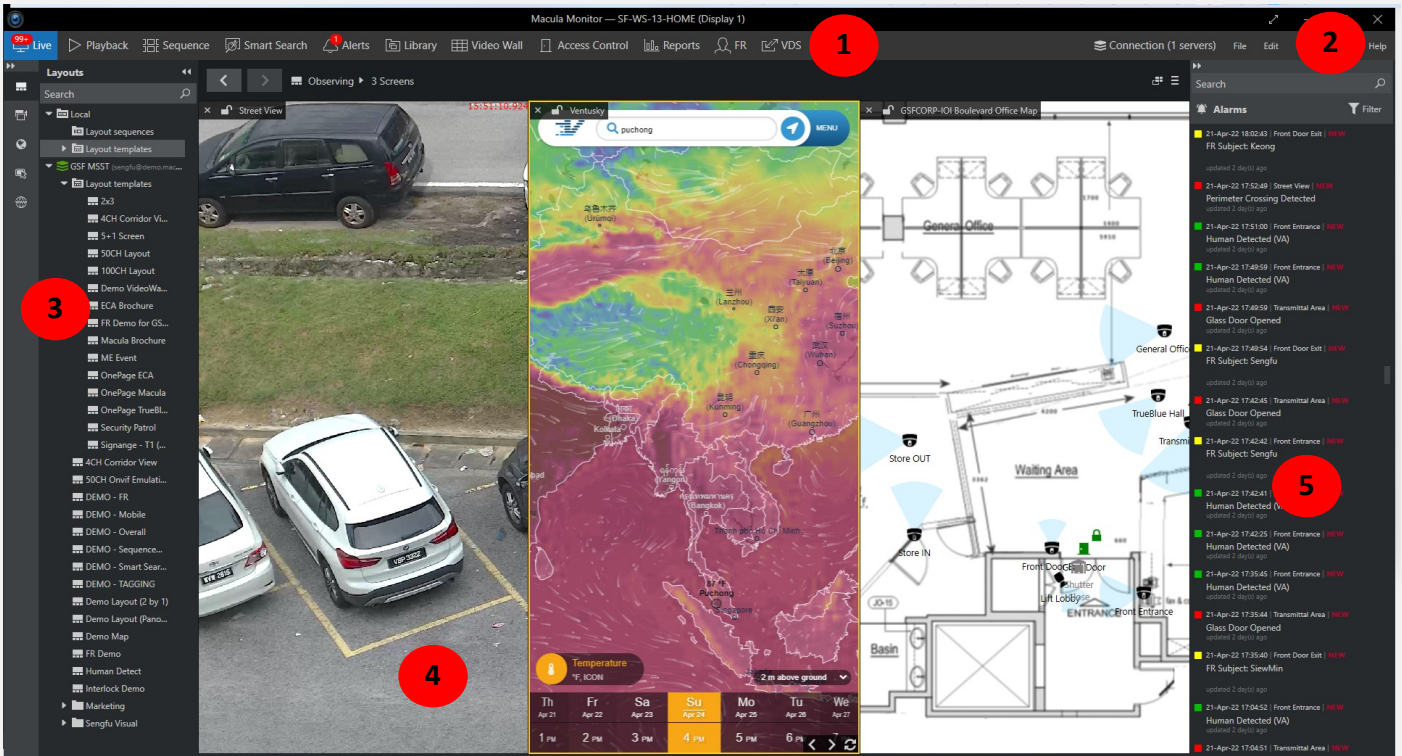
This a remarkable integrated physical security information management with simplicity, flexibility and scalability, by add any 3rd party webpage or windows application, Ai, and IoT Sensors. Interactive all of them together under single macula monitor GUI

Organisation Hierarchy

The functionality allows the construction of a more structured hierarchy of system rights and privileges among users within an organisation. The group's administrator (or sub-admin) rights are also specific for each group, thus valid only for the chosen scope of cameras and servers.

Archive replication

Make your local recording server into a buffer server. In large enterprises, this allows for convenient local usage and scheduled or constant data transfer to Central Data Centre, whenever the network is available.



Graphic User Interface (Macula Monitor)

1: Application TAB 2: Menu 3: Navigation 4: Viewports 5: Alarms panel for live notifications.

Experience Macula monitor yourself. Download here:

Server address:

username:

password:

Contact: sales@gsfcorp.com

Supported Technologies



ONVIF Profile



Android



iOS



Windows



Chromecast



MacOS X



Codec



HTML5

Tech Specs

Compare Macula Versions

App.	Features	Professional	Enterprise
General / Support	Number of simultaneously connected channel devices	Start from 4CH to Unlimited	Start from 50CH to Unlimited
	Licensing type	Individual server	Central server
	Server License	Single server	Add multiple servers (no limits)
	License upgrade option	Available	Through channel addon
	Archive size / Storage duration	Unlimited (Based on Storage Hardware Design)	
	TrueBlue Care	Available	
	Phone support	2 year since last available release date	
	Email support		
	Remote support		
	Version updates	2 year since license activation date	
Version update plans	Yearly		

Continue next page >

Tech Specs

		Compare Macula Versions		
App.	Features	Professional	Enterprise	
Server / Console	Clients application connections	Unlimited		
	Web application connections			
	Android and iOS application connections			
	Local and Remote configuration management	Per each server	Centralized	
	Local and Remote user management	Unlimited		
	Supported video stream resolutions	> 4000 models		
	Supported cameras/devices	Available		
	Generic Device drivers: ONVIF, RTSP, PSIA, HTTP	Available		
	Analogue PTZ protocols (via RS-232,422,485 ports)	Both available		
	32 and 64-bit versions	Available		
	Video capture board support	Available within each server	Global for all connected servers	
	E-mail notifications	Not applicable	Available	
	Advanced Events & Actions (see full list below)	Available		
	Recording server auto discovery			
	Service mode			
	Software watchdog			
	Device auto discovery			
	Local storage support			
	Remote/network storage support			
	Storage configuration per camera			
	Camera/Device side motion detector support			
	Camera/Device side VCA event support			
	Software motion detector support			
	Motion information recording			
	Constant Video and Audio recording			
	Video and Audio recording by Motion			
	Recording profiles by Schedules			
	User permissions per each resource/component			
	Device and User grouping			
	User audit			
	System monitoring			
	HTTP API for third party integrations			
	Camera side multicast support			
	Interactive web application device support			
	Interactive remote application device support			
	Network speaker/horn speaker support			
	WASAPI device support			
	Two-factor authentication (via email)			
	Cyber security dashboard			
	256-bit AES encryption support			
	Configuration backup and restore			
	Live broadcasts (YouTube, Wawza, RTMP)			Unlimited
Active directory & LDAP	Unlimited			
E-maps & Geo-maps	Available within each server			Centralized
Recording Server failover support	Not available			
Archive replication/backup within multiple servers				
Video Wall support				
Organizations hierarchy support	Available			
Remote software upgrade	Available			
Edge recoding support (for ONVIF Profile G devices)				
Support for Digital inputs (please refer link)				
Support for Digital outputs (please refer link)				
Client application multicast support				
Software VCA support (additional licensing for analytics)	Available			
Application (APP) Addon support	YES: VDS, LPR, Face, Access Control, 3rd Party Ai, etc			

Tech Specs

		Compare Macula Versions	
App.	Features	Professional	Enterprise
Smart Logic : Events	Central server connected	Not available	Available
	Central server disconnected		
	Global event	Available	
	Disk excluding		
	Fallback activating		
	Motion		
	Motion started		
	Motion stopped		
	Recording error		
	User button clicked		
	Video lost		
	Video restored		
	Digital input		
	VCA event (edge/server-side)		
	Scheduled event		
	VDS addons app data event / value		
Smart Logic : Actions	Activate global event	Not available	Available
	Pop up an object on video wall display		
	Generate alert for main stream (for alert-based recording)	Available	
	Generate alert for sub stream		
	Pop up an object on screen (channel/map/layout)		
	Set condition		
	Unset condition		
	Write to application log		
	Write to audit log		
	Activate main stream recording profile		
	Activate sub stream recording profile		
	Send email		
	Send email with a snapshot		
	Run program		
	Activate PTZ preset		
	Control digital input		
	Highlight object on map		
	Send HTTP request		
	Send SNMP trap		
	Create archive bookmark with a user acknowledgement option		
Send event to client: Display event in Alerts			
Send event to client: Display event in Notification panel			
Send event to client: Display a Warning message box			
Send event to client: Trigger audio notification			

Continue next page >

Tech Specs

		Compare Macula Versions	
App.	Features	Professional	Enterprise
Client	32 and 64-bit versions	Both available	
	Server connections	Unlimited	
	Live video streaming	Unlimited	
	Live video sub stream support		
	Number of supported displays	Available	
	Instant playback		
	Archive forward and backward playback		
	Playback speed controls: regular, slow and fast		
	GPU decode live video		
	Export timelapse video		
	Archive Sequence search		
	Archive Smart search		
	Build-in and custom Layouts		
	Layout management		
	Layout sequences		
	PTZ, Iris and focus control		
	PTZ presets		
	PTZ tours		
	Digital PTZ		
	Fisheye and Panomorph dewarping		
	Motion detection status and overlay		
	Multiscreen setup		
	Alerts		
	Export Snapshot from live view and archive		
	Video export from archive		
	Export Library		
	Operation modes: Always on top, Exclusivity and Locked		
	Advanced Information about live video stream		
	Video maintain aspect ratio mode		
	USB Joystick Support		
	Archive Bookmarks		
	Client application security settings		
Client application UI color configuration			
User buttons	Available		
Shared Layouts			
E-maps & Geo-maps			
Visual data support			
Archive Portable player	Available		
Mobile and Web	Server connections	Unlimited	
	H.264 streaming to Web and Mobile applications	Available	
	Live video sub stream support		
	Up to 6 cameras per single live view for Mobile apps.		
	Up to 4 cameras per single live view for Web application		
	Hardware GPU utilization for Mobile application		
	Custom view layouts		
	Two-way audio support		
	PTZ control		
	PTZ presets		
	Archive playback		
	Save snapshots		
	Google Chromecast support		
	Video & audio streaming from mobile devices		
	Mobile App Push Notifications		

